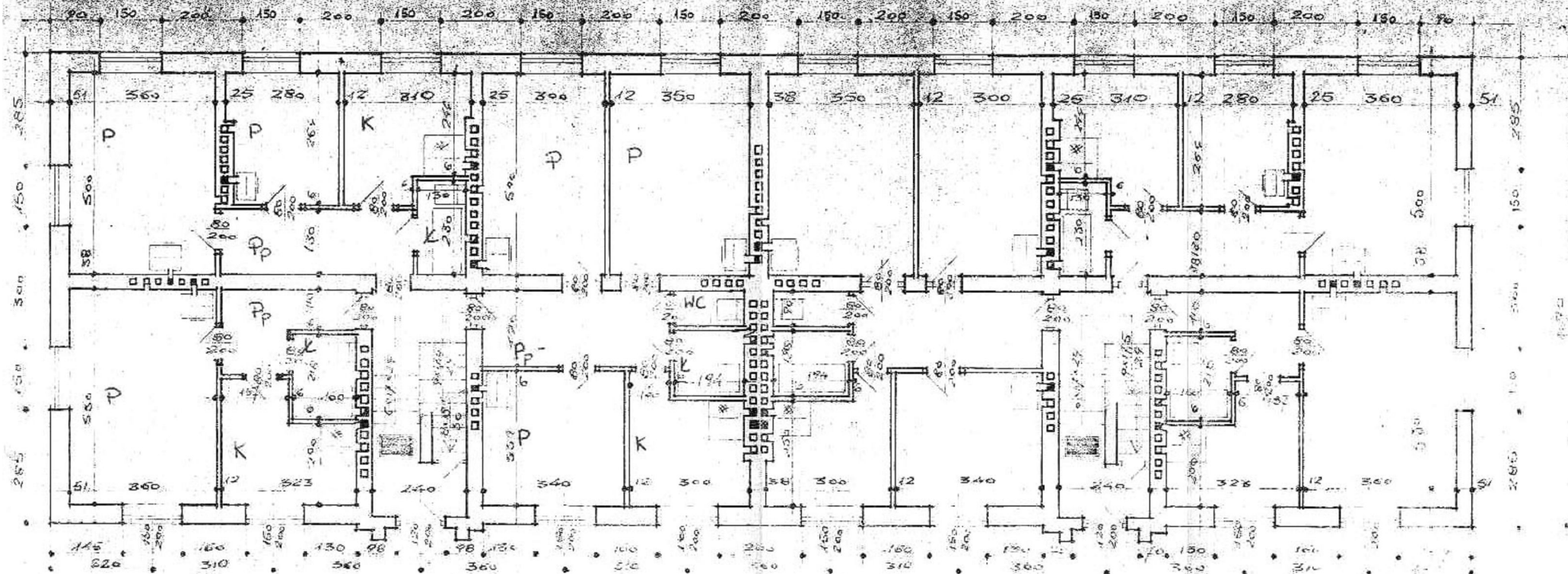
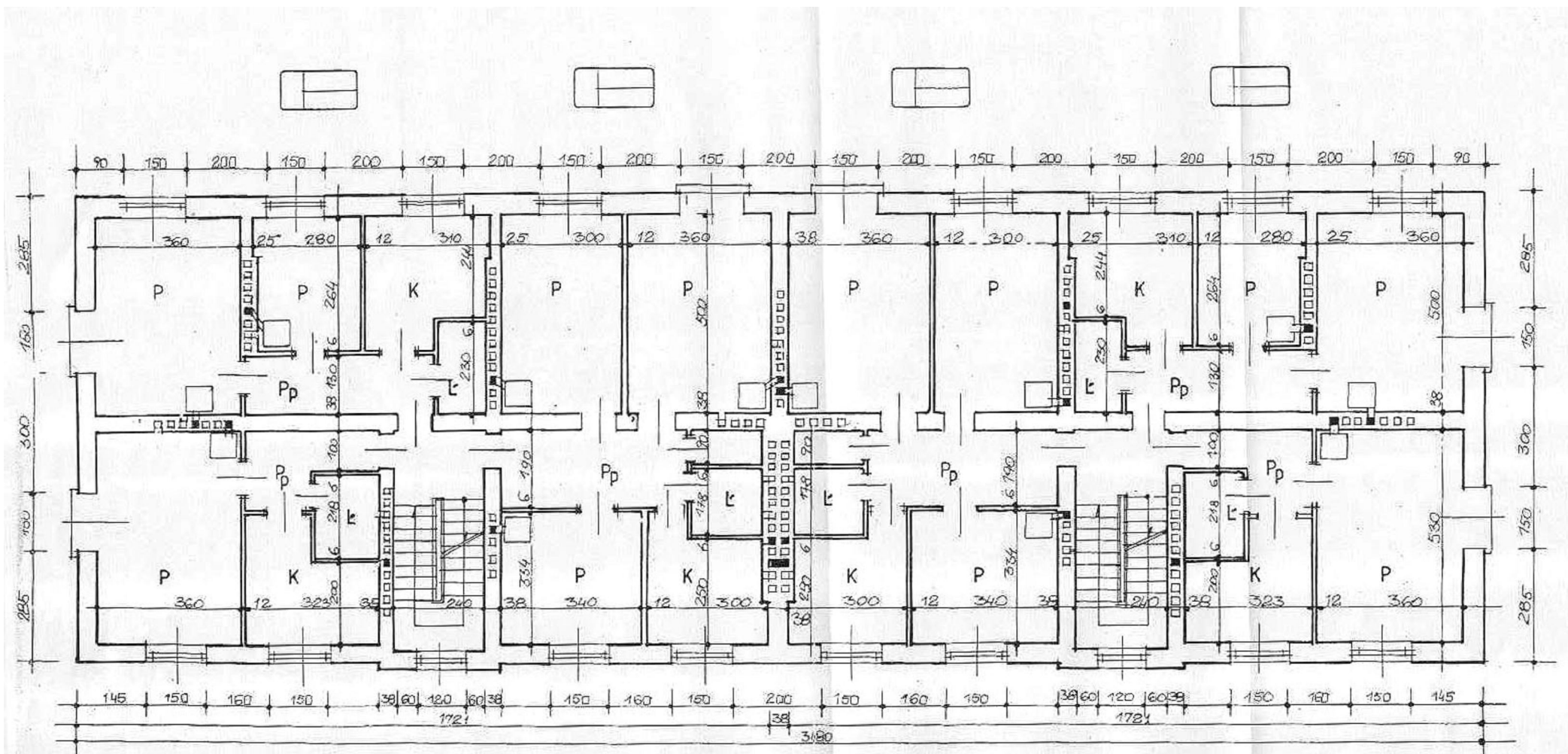




# RZUT PARTERU 1:100





I PIĘTRO - RZUT

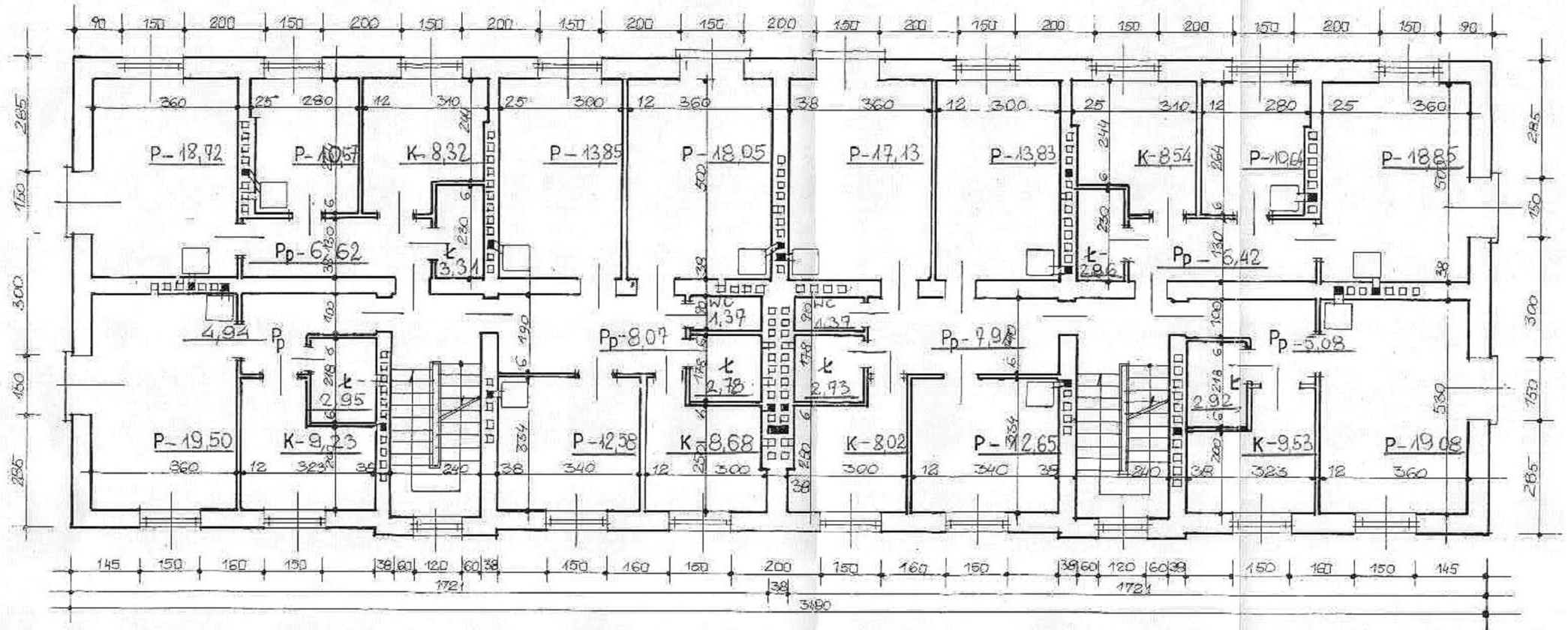
# RZUT II-GO PIĘTRA

8 47.54  
m<sup>2</sup>

9 65.38  
m<sup>2</sup>

16 63.64  
m<sup>2</sup>

17 47.31  
m<sup>2</sup>



7 36.62  
m<sup>2</sup>

18 36.61  
m<sup>2</sup>